



.....

.....

8025L24B

SNOWFAN P/N: G1408094B

Version.: 0 Sample NO.:

Issue date: 2019-5-31 Quantity: 0 PCS

***Please sign back this specification for our record upon your approval. Thanks!**

Company Stamp

Customer Approval Stamp

28035708

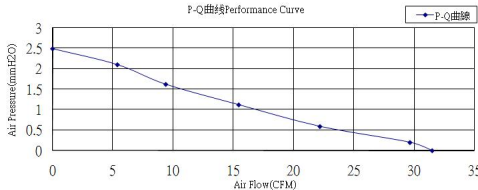
28035808

<http://www.snowfan.com.cn/>

E-Mail: yongyihao@snowfan.com.cn

A		2019.5.31

1.0 General Specification

Item		/ Specification/Condition																			
1	Model No.	YY8025L24B																			
2	Outline. Dimension	80*80*25mm																			
3	Operating Voltage	DC 14 27.6V																			
4	Rated .voltage	DC 24V																			
5	Starting Voltage	DC ≤14V on/off																			
6	Rated current	0.05A(Max:0.08A)	a. Rated .voltage b.25 65% RH c.After testing for 5 minutes																		
7	Power consumption	1.2W(Max :1.92W)																			
8	Speed	2500±10%RPM																			
9	Airflow AT ZERO STATIC PRESSURE	31.45CFM(Min:28.31CFM)	a. Rated .voltage b. AMCA Standard C. Rated current																		
	Air .Static Pressure AT ZERO AIRFLOW	2.49mmH2O (Min 2.24mmH2O)																			
10	Noise Level	31dB-A(Max:34dB-A)	a. Rated Voltage b. 18dB 18dB Non-Echo Chamber c. Standard: CNS 8753 / ISO 3744 d. Test Condition :ISO 7779 e. Distance: 1.0 M																		
11	Life expectancy	70000 hrs at temp40 Humidity5% 95%	MTTF (Mean Time To Failure Conf. Level 90%)																		
12	No.of.Blade	7																			
13	No.of.Pole	4																			
14	Rotating Direction	/																			
15	Lock Protection	1. 2 3 , , , Auto power off after locked at rated voltage for 2 3 sec. Reduce internal temperature rise 2. , 2 6 After auto power off, circuit attempt to restart in 2 to 6 sec.																			
16	Polarity Protection	VCC GND Open circuit when Vcc & GND are exchanged																			
17	Over voltage protelt	NO																			
18	Over current protection	NO																			
19	fixed constant speed Function	NO																			
20	Soft Starting	NO																			
21	PWM PWM function	NO																			
22	PQ PQ curve	 <p>P-Q曲线Performance Curve</p> <table border="1"> <caption>Performance Curve Data Points (Approximate)</caption> <thead> <tr> <th>Air Flow (CFM)</th> <th>Air Pressure (mmH2O)</th> </tr> </thead> <tbody> <tr><td>0</td><td>2.5</td></tr> <tr><td>5</td><td>2.2</td></tr> <tr><td>10</td><td>1.8</td></tr> <tr><td>15</td><td>1.4</td></tr> <tr><td>20</td><td>1.0</td></tr> <tr><td>25</td><td>0.6</td></tr> <tr><td>30</td><td>0.2</td></tr> <tr><td>35</td><td>0.0</td></tr> </tbody> </table>		Air Flow (CFM)	Air Pressure (mmH2O)	0	2.5	5	2.2	10	1.8	15	1.4	20	1.0	25	0.6	30	0.2	35	0.0
Air Flow (CFM)	Air Pressure (mmH2O)																				
0	2.5																				
5	2.2																				
10	1.8																				
15	1.4																				
20	1.0																				
25	0.6																				
30	0.2																				
35	0.0																				

2.0: / Main Materials/parts Specification

/ Materials/parts		Specification		
1	/ Plastic Material/ Frame impeller	: PBT		94V-0
		: PBT	7	94V-0
2	Bearing Type	Ball Bearing		
3	Lead Wire	UL1007#24#		
4	Connector	-2P		
		GND	VCC	
5	Environmental Requirement	<input checked="" type="checkbox"/>	<input type="checkbox"/>	<input type="checkbox"/>

3.0 Electrical Specifically

1	Insulation Resistance	10MΩ/ 500VDC/min 10MΩ/between unshackled wire and frame at 500VDC/min
2	Dielectric Strength	5Ma Max./ 500VAC/min 5Ma Max./Measured between lead wire(+)and frame at 500VAC/min
3	Waterproof level	IP XO

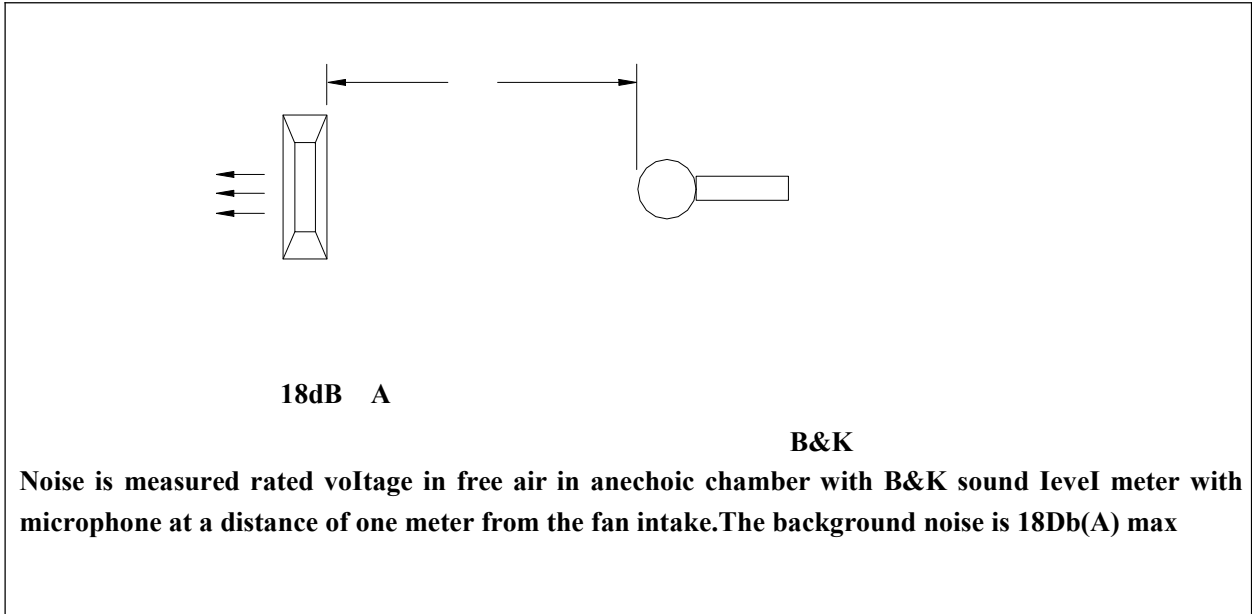
4.0 Environmental Specification

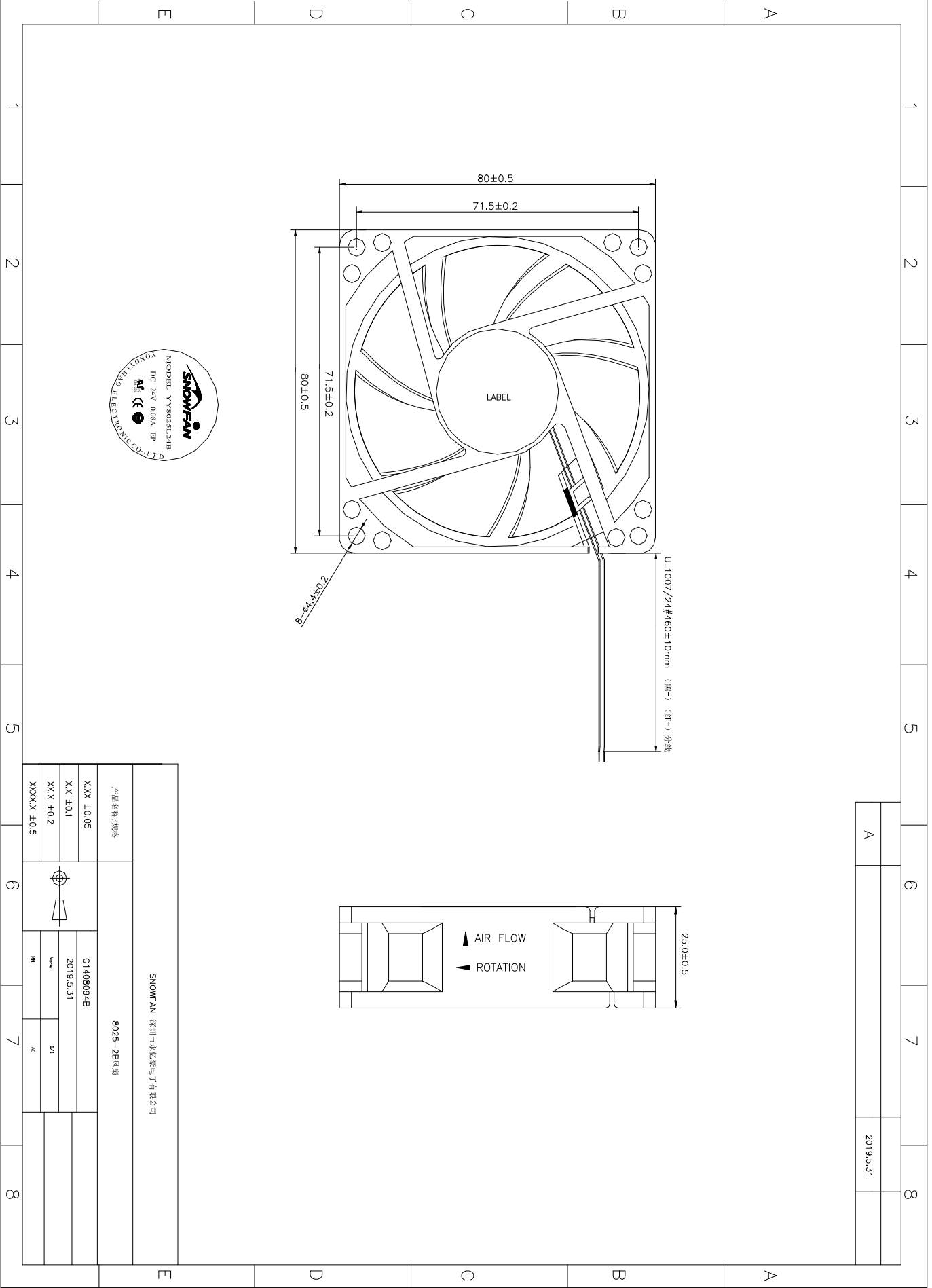
1	/ Operating Temp .Range	/Temperature:-10 +70 /Humidity:5% 95%RH
2	/ Storage Temperature	/Temperature:-40 +75 /Humidity:5% 95%RH
3	Humidity	MIL-STD 202F Method 103B 95%RH 40±2
4	Thermal Shock	MIL-STD 202F Method 107D Per MIL-STD 202F Method 107D,Condition D
5	Insulation Shock	UL: A UL Class A
6	Packing Vibration Test	XYZ 3.2G load vibration test for 30min .No serious damage
7	Packing Shock Proof Test	60 1 3 6 1corner,3edges, 6faces natural drop from 60cm high packing No serious damage

5.0



Noise is measured at rated voltage in anechoic





A		2019.5.31
---	--	-----------

产品名称/规格		SNOWFAN 深圳市永亿泰电子有限公司		
XXX ±0.05		G1408094B	8025-2B 风扇	
X.X ±0.1		2019.5.31		
XXX ±0.2		MM	1/1	
XXXX ±0.5		MM	20	

NOTES

1 Before use, make sure the supply voltage to meet the use of the product range, line-powered load exceeds the maximum power consumption of this product 120%. And the voltage is stable without clutter

120%

2 Please when ventilator circular telegram normal work do not use the hand to bump touches fan blade border

3 Please do not touch the impeller and never carry the fan the lead wires. The bearings and the lead wires may be damaged. Additionally, static electricity may damage the internal circuits of the fan

(,)

4 Please do not use the fan in the environment of corrosive gas or liquid.

5 Please do not store the fan in the environment of high humidity. Please avoid storage of the fan over 6 months. For long term storage, please connect power to the fan shortly every 6 months even though the fan is stored in room temperature.

6

6

